



IBM Fusion

Unifying AI, Kubernetes, Data, Management, and Workloads

Nikolaos Egglezos

Solutions Architect / Hybrid infrastructure

negglezos@intrust.gr



Agenda

- ☐ Strategic Trends Shaping IT
- ☐ IBM Fusion Platform Overview
- ☐ Core Capabilities and Strengths
- ☐ Key Takeaways

Today's IT Ecosystem **Challenges**

- ⋮ Managing **complex IT environments**, workloads across multiple infrastructures – platforms.
- ⋮ Pressure for **Innovation** and demand for **faster delivery** of services.
- ⋮ **Maintaining security** and **compliance** requirements across platforms.
- ⋮ **Cost Optimization** IT budgets are under pressure, necessitating **smarter resource** allocation.

Market Reshaping IT

Trends in Data, AI and Containerization

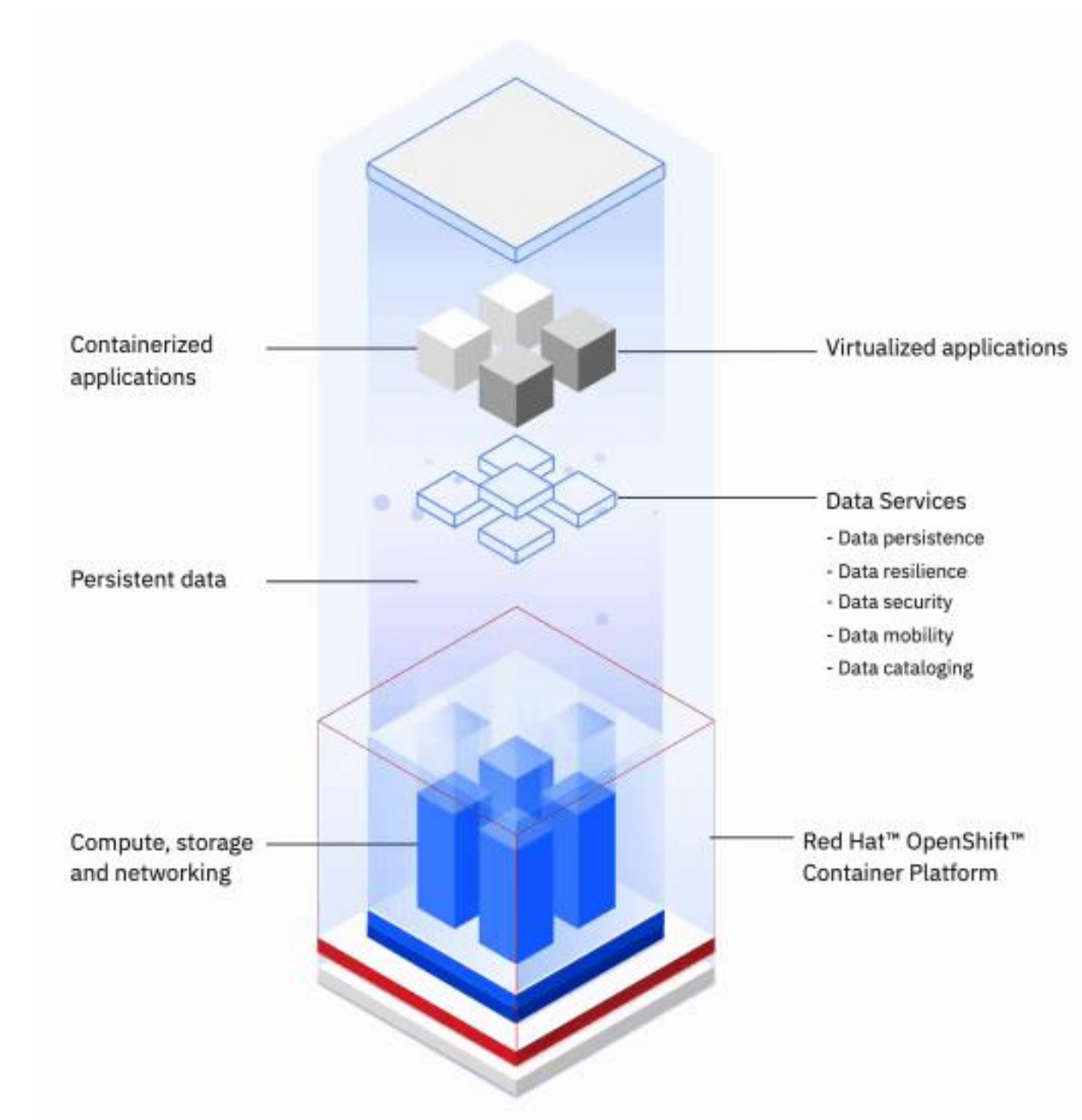
- ➔ **Explosive Data Growth** : Enterprise data is growing at ~23% CAGR; making its management a critical strategic priority.
- ➔ **AI Moves to Center Stage**: AI adoption has surged over 75% of enterprises plan AI integration within 2 years, increasing the need for scalable infrastructure.
- ➔ **Shift to Containerized Architecture**: 92% of organizations use containers in production for microservices and AI workloads; Containers and Kubernetes are driving greater flexibility and scalability.
- ➔ **Hybrid & Multi-Cloud Demand**: Organizations increasingly operate across multiple clouds, requires unified management and governance layers.

IBM Fusion: Application Data Platform for AI, Containers, and Virtual Machines

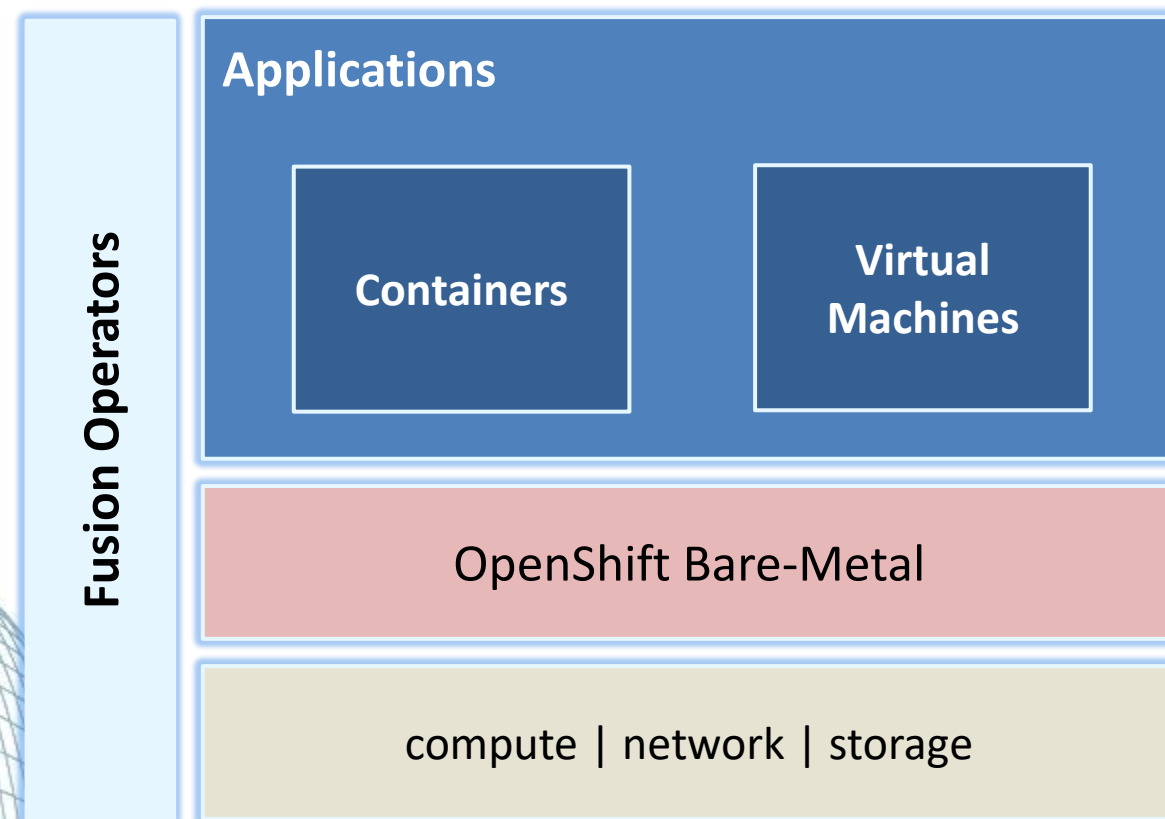
What IBM Fusion is ?

A single, **unified Data platform** for **AI, Containers** and **virtual machine workloads** with Automated **orchestration**, enabling gradual **modernization** while reducing **operational complexity**.

Available both as a **software license** and as **Hyper-Converged Infrastructure (HCI)**.



IBM Fusion: Core Capabilities



Unified Platform Run VMs, Containers, and AI workloads together

OpenShift Cloud-agnostic, Virtualization **Portability, Scalability** to any platform, Cloud

Watsonx Integration AI-driven **Automation**, Data Analytics, decision support

Automation Intelligent **deployment of workflows** for operations like **Auto DR**, Auto-Scaling

Data Services, Centralize **management**, data **cataloging**, data **protection**, data **classification**

Observability End-to-end **Visibility**, **Real-Time Metrics**, **Anomaly detection**, Insights,

Hybrid Flexibility, **Multi-Cluster Support**, Hardware and GPU **Flexibility**

Resilience Multi-AZ **High-Availability**, **Automated DR**, **Crash-Consistent Backups**, **a-Sync Rep**

Security & Compliance **IAM and API security**, **Integration with Identity Providers** Zero Trust, **GDPR ready**, Policies Support

Cost Optimization Lower TCO by **unifying infrastructure**

IBM Fusion: Key Points

Accelerated Deployment & Time to Value

stack with **blueprints** and **automation**. Projects that used to take months Pre-integrated hardware + software can be deployed in **days** or weeks.

Hybrid & Multi-Cloud Ready Solution

Seamless support for on-premises, edge, and public cloud environments. **Avoid lock-in** and give **flexibility** to **move workloads** where they make sense.

Simplified Management

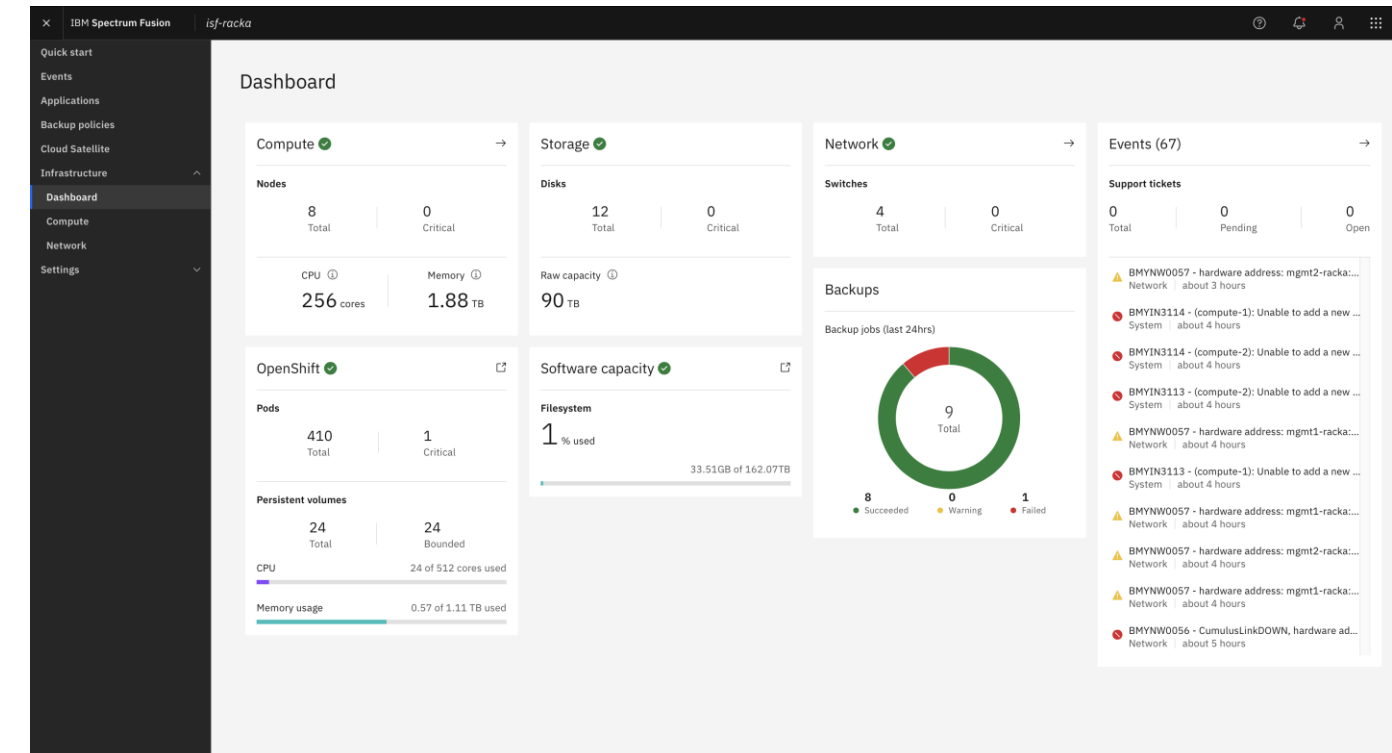
Single pane of glass for **compute, storage, networking**, and data services. Lifecycle management, **automation** and **policy consistency** reduce admin effort.

Scalable & Future-Ready

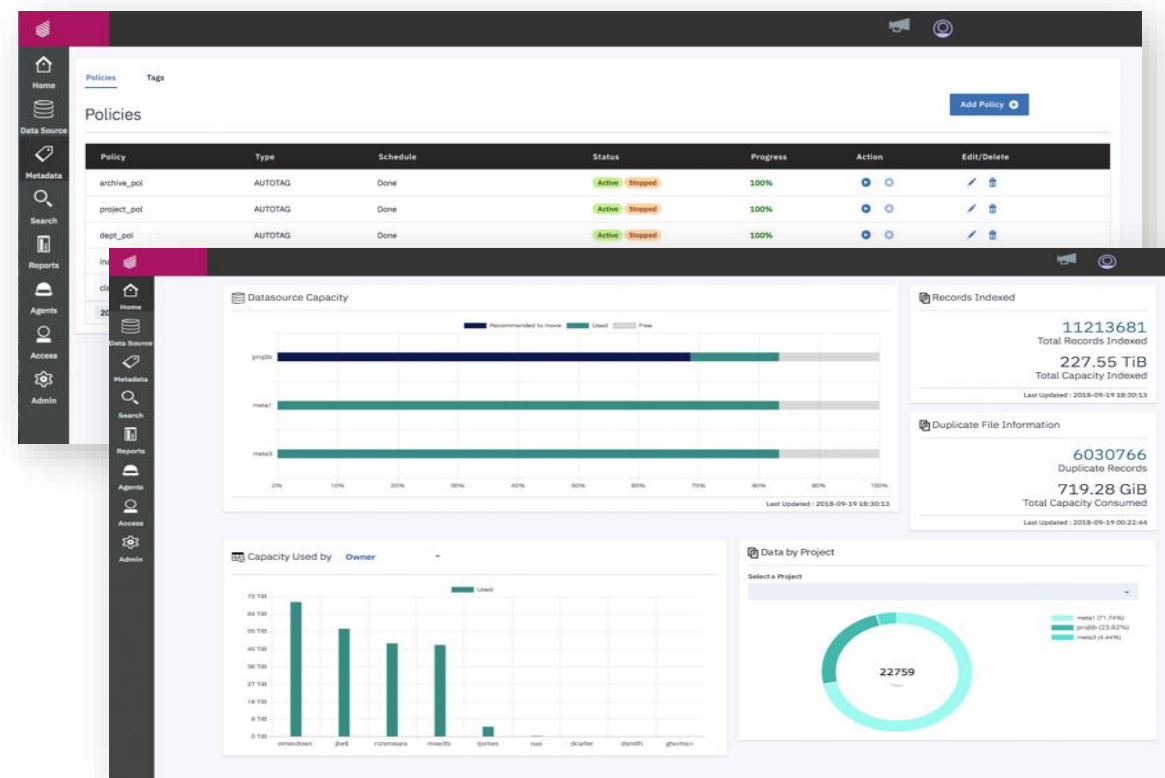
Supports current workloads and is **ready for next-gen** AI and hybrid cloud demands. **Start small**, (3-node) scale as needed with modular expansion.

IBM Fusion: Key benefits

- ✓ **Single-point of contact** Hardware and Software support from IBM.
- ✓ **All-in-One Platform** for Enterprise Needs
- ✓ **Unified Infrastructure** for Isolated Prod & Test Clusters



- ✓ **IBM-Validated Fusion Updates:** Ensuring Delivery, Compatibility & Continuity.
- ✓ **Security & Compliance Ready,** Intelligent insights, Encryption, Ransomware protection, Zero Trust Security Model
- ✓ **Flexible Licensing Model**



IBM Fusion: Key Takeaways

Legacy Modernization without full replacement

Automating Governance with AI and Watsonx Integration — While **Ensuring Security**

Start Small, Scale Fast: Pilot critical workloads, scale progressively.

Experts' guidance for planning, migration, upgrades, and integration

Combining AI, Data, and Container systems **needs careful Design.**

Establish clear data **policies** and **access** controls to **minimize regulatory** risks and penalties.

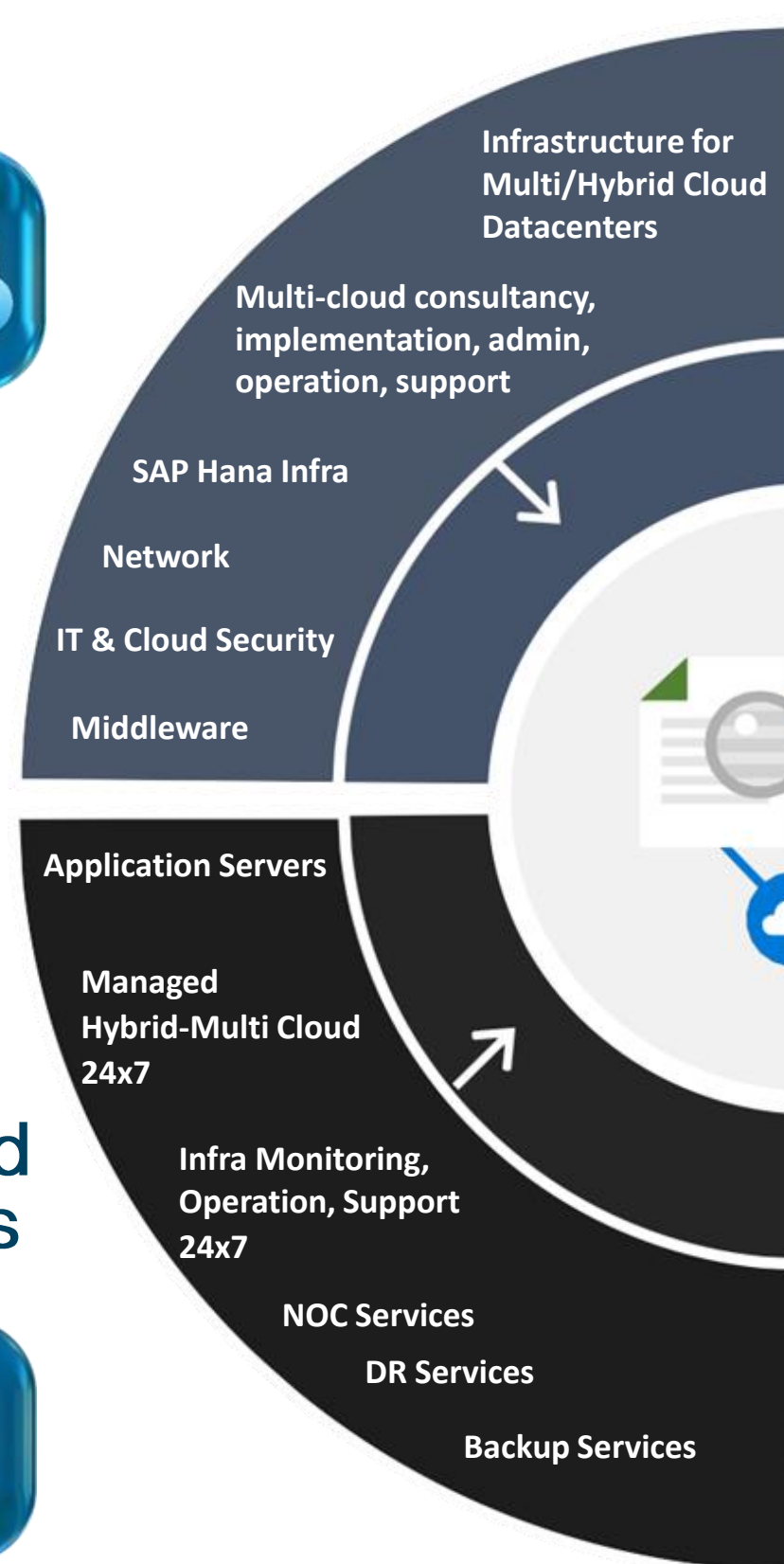
Bridging Skills and Training Gaps: Investing in IBM Fusion Training is Essential for **Success**

Challenges

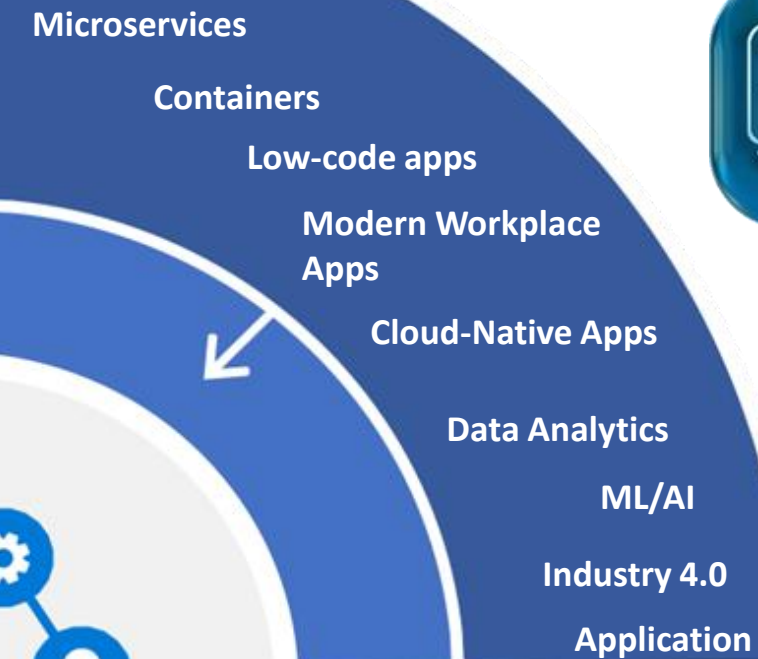
We can help

Portfolio of Services

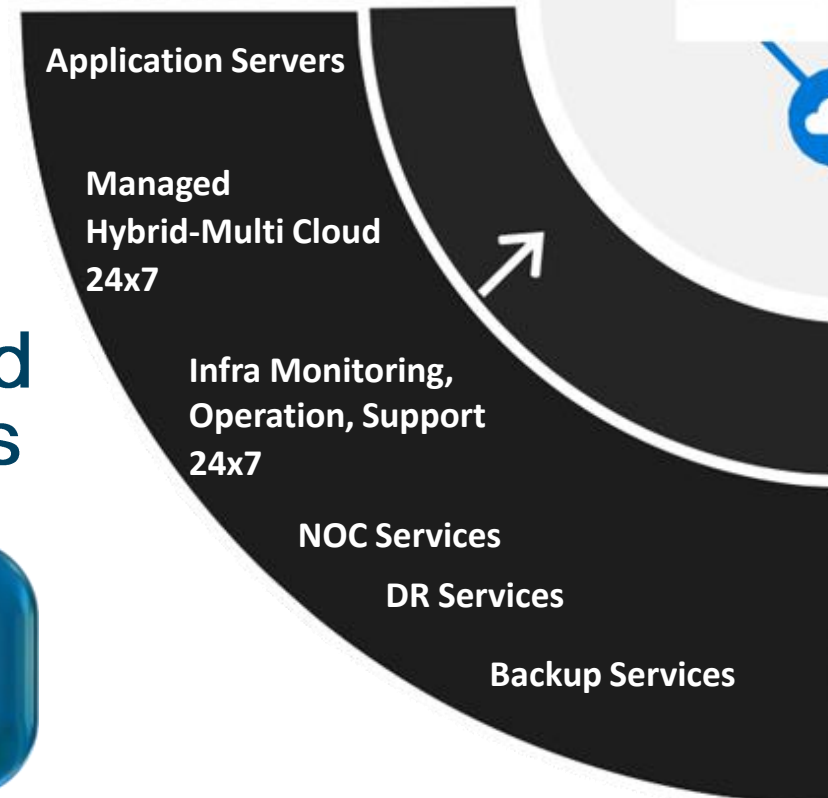
Dynamic Infrastructure Services



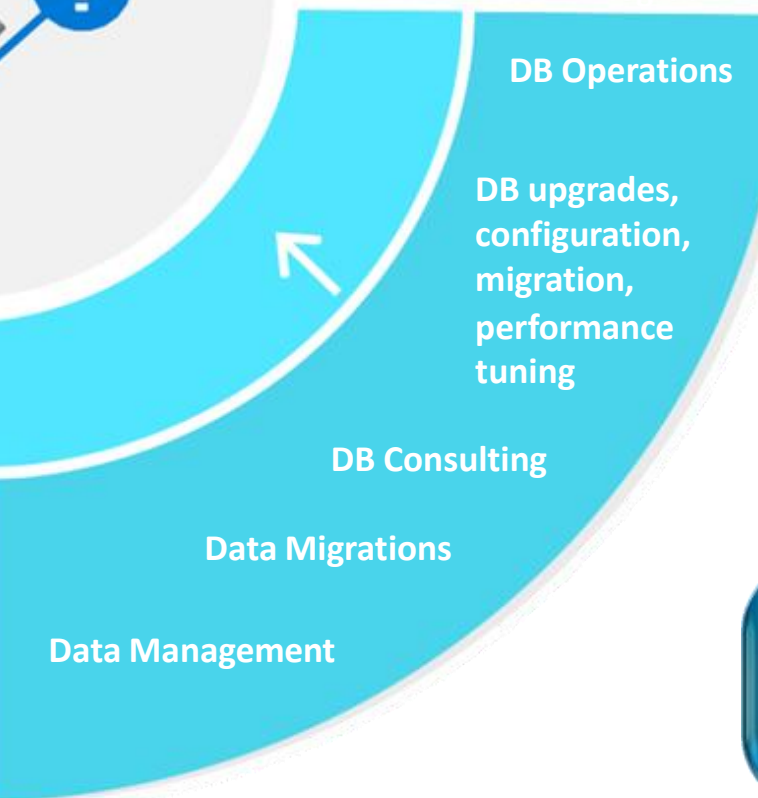
Application Development Services



Managed Services



DBA Services





Your InTTrusted Partner for

 **Transformation**

 **Growth**

 **Excellence**





Thank you

Nikolaos Egglezos

Solution Architect / Hybrid Infrastructure

negglezos@intrust.gr



BOUSSIAS
events presents

20-Year Anniversary Edition

IT Directors Forum

Command the Future. Lead with Tech

6 Οκτωβρίου 2025

Μέγαρο Μουσικής Αθηνών